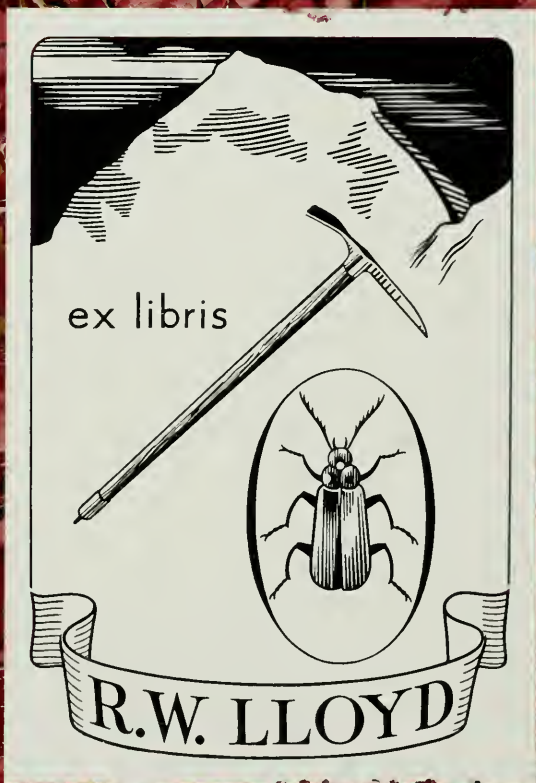


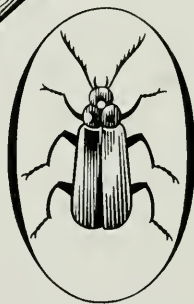
5/6/1893

to

12/16/1893

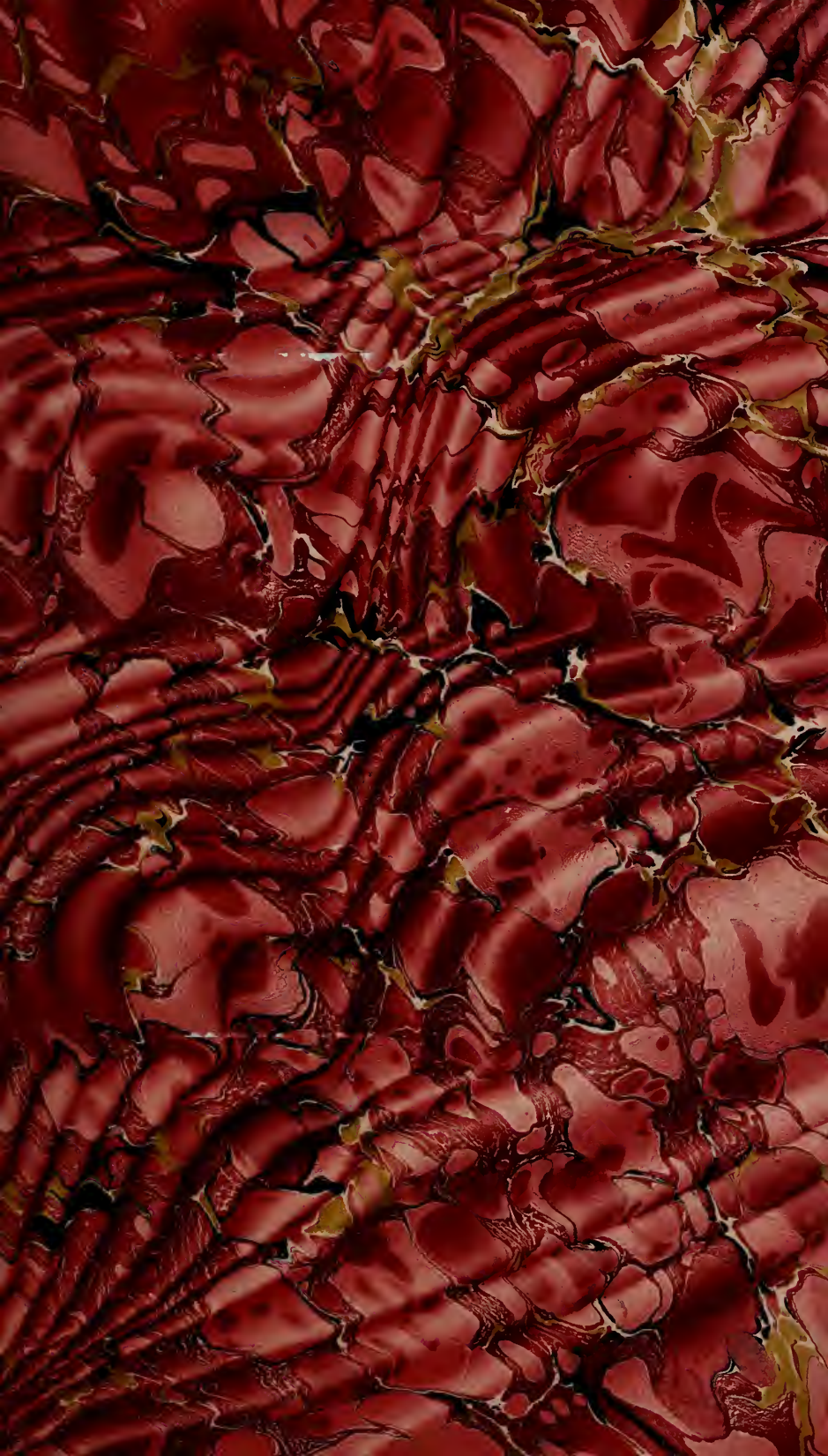


ex libris



R.W. LLOYD











CATALOGUE

OF

THE VALUABLE COLLECTION OF

1893  
May 6  
L-11  
**PORTRAITS & OTHER PICTURES,**

Chiefly of the Early English School,

THE PROPERTY OF

**THOMAS PRICE, ESQ.,**

*Deceased, late of the Albany,*

Including the Portrait of Lady Caroline Price, one of the  
finest works of Sir Joshua Reynolds;

ALSO THE

**COLLECTION OF PICTURES BY OLD MASTERS,**

OF

MRS. YOUNG, Deceased, late of Onslow Square;

Also PICTURES, the Property of the late

C. J. NIEUWENHUYNS, ESQ.,

THE LATE

RT. HON. SIR WILLIAM GREGORY, K.C.M.G.,

The late W. PARKER HAMOND, Esq., and

The late J. L. GARDEN, Esq.:

WHICH

Will be Sold by Auction, by

**MESSRS. CHRISTIE, MANSON & WOODS,**

AT THEIR GREAT ROOMS,

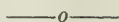
8 KING STREET, ST. JAMES'S SQUARE,

On **SATURDAY, MAY 6, 1893,**

AT HALF-PAST ONE O'CLOCK PRECISELY.

May be viewed Three Days preceding, and Catalogues had,  
at Messrs. CHRISTIE, MANSON and WOODS' Offices, 8 King Street,  
St. James's Square, S.W. L05714

## CONDITIONS OF SALE.



- I. THE highest Bidder to be the Buyer; and if any dispute arise between two or more Bidders, the Lot so in dispute shall be immediately put up again and re-sold.
- II. No person to advance less than 1s.; above Five Pounds, 5s.; and so on in proportion.
- III. In the case of Lots upon which there is a reserve, the Auctioneer shall have the right to bid on behalf of the Seller.
- IV. The Purchasers to give in their Names and Places of Abode, and to pay down 5s. in the Pound, or more, in part of payment, or the whole of the Purchase-Money, *if required*; in default of which, the Lot or Lots so purchased to be immediately put up again and re-sold.
- V. The Lots to be taken away and paid for, whether genuine and authentic or not, with all faults and errors of description, at the Buyer's expense and risk, within Two days from the Sale; Messrs. CHRISTIE, MANSON and WOODS not being responsible for the correct description, genuineness, or authenticity of, or any fault or defect in, any Lot; and making no warranty whatever.
- VI. To prevent inaccuracy in delivery, and inconvenience in the settlement of the Purchases, no Lot can on any account be removed during the time of Sale; and the remainder of the Purchase-Money must absolutely be paid on the delivery.
- VII Upon failure of complying with the above Conditions, the Money deposited in part of payment shall be forfeited; all Lots un-cleared within the time aforesaid shall be re-sold by public or private Sale, and the deficiency (if any) attending such re-sale shall be made good by the Defaulter at this Sale.



# CATALOGUE.

On SATURDAY, MAY 6, 1893,

AT HALF-PAST ONE O'CLOCK PRECISELY.

*The following are the Property  
of T. PRICE, Esq., deceased, late of the Albany.*

*(Sold by Order of the Executors).*

SIR T. LAWRENCE, P.R.A., 1791.

21 37 PORTRAIT OF THE LATE SIR ROBERT PRICE, BART., WHEN A CHILD—*in chalk* *Wentworth*

J. RUSSELL, R.A.

22 38 LADY ALMEIRA CARPENTER, Daughter of the Earl of Tyrconnel, and Sister to Lady Caroline Price—*in crayons* *A. Smith*  
*24 x 18*

J. FERNELEY, 1848.

3½ 39 "THE CLOUD KING" *30 x 26*

3½ 40 "STEADY," 1853 *30 x 36*

*Davis.*

E. F. HOLE, 1866.

- 1/2 { 41 "MISS SNABS," favourite charger of Colonel E. Price, C.B., Royal Horse Artillery  $12 \times 14$

W. WEBB.

- 42 PORTRAIT OF A BLACK HORSE IN A LANDSCAPE  $12 \times 14$

BEN MARSHALL.

- 45- 43 BARRINGTON PRICE, about to mount his favourite horse "Monarchy," his brother Major Price, with pigtail, standing outside the old house at Beckett *Volkins*

*Signed, and dated 1804* $36 \times 42$ 

BEN MARSHALL.

- 135- 44 A GROOM, WITH GREY HORSE, at Beckett, near Shrivenham *do*

 $36 \times 42$ 

DE VLIIEGER.

- 6 1/2 45 A COAST SCENE, with shipping

 $2 1/2 \times 8$ 

T. GAINSBOROUGH, R.A.

- 145- 46 UVEDALE T. PRICE, Esq., of Geeler, Denbighshire, and Foxley, Herefordshire

Born 1685. Married Anne, daughter of Lord and Lady Arthur Somerset. Died 1764.

 $48 \times 36$ 

T, GAINSBOROUGH, R.A.

- 35- 47 ANNE, wife of Uvedale T. Price, Esq., daughter of Lord Arthur Somerset *J. P. Leav*

 $20 \times 14$ 

T. GAINSBOROUGH, R.A.

- 21 48 ROBERT PRICE, OF GEELER AND FOXLEY, born 1717

 $24 \times 18$

## W. HOGARTH.

- 300 49 THE PRICE FAMILY  
40 in. by 62 in.

*M<sup>c</sup>Lean*

Uvedale T. Price, Esq., of Foxley, Herefordshire, and Geeler, Denbigh, assisting his cousin Miss Rodd from a boat, his eldest son Robert leading another cousin Miss Greville, her sister Hester feeding swans, their brother called Jockey Greville fondling a greyhound, other relations and attendants around.

## SIR G. KNEILLER.

- 64 50 ARABELLA HUNT

*Wallis*

The poet Congreve was in love with Miss Arabella Hunt, but her father would not give his consent to the marriage.

“Were there on earth another voice like thine,  
Another hand so blest with skill divine;  
The late afflicted world some hopes may have,  
And Harmony retrieve thee from the grave.”—*Congreve*.

## SIR G. KNELLER.

- 21 51 LORD ARTHUR SOMERSET, second son of first Duke of Beaufort

Married Mary, daughter of Sir W. Russell, Bart., and widow of H. G. Cotton, Esq.

*48 x 40*

## SIR G. KNELLER.

- 48 52 LADY ARTHUR SOMERSET, daughter of Sir W. Russell, Bart., and widow of H. G. Cotton, Esq., of Combermere

## SIR G. KNELLER.

- 28 53 ROBERT PRICE, of Geeler and Foxley, Baron of the Court of Exchequer, born 1653, died 1732

*30 x 20*

## S. LANE.

- 32 54 SIR ROBERT PRICE, BART., M.P. for Herefordshire  
30 x 24

*Wallis*

## SIR T. LAWRENCE, P.R.A.

- 36 55 SIR UVEDALE PRICE, BART., of Geeler and Foxley, born 1747 do  
died 1829 30 x 24

## J. OPIE, R.A. (AFTER REYNOLDS).

- 40 56 ADMIRAL THE HON. SAMUEL BARRINGTON, son of Viscount  
Barrington, died 1800 30 x 24

*Tooth*

## A. POND.

- 25 57 SIR UVEDALE PRICE, BART., of Geeler and Foxley, when a child  
30 x 24

*Sinclair*

## A. POND.

- 22 58 SARAH, wife of Robert Price, of Geeler and Foxley, daughter of  
Viscount Barrington, died 1759  
30 x 25

*Graves*

## SIR J. REYNOLDS.

- 70 59 THE LADY CAROLINE, WIFE OF SIR UVEDALE T.  
PRICE, BART., and daughter of the Earl of Tyrconnel, born  
1755, died 1828

*Wentworth*

30 in. by 25 in.

*Painted in November, 1786**Engraved by J. Jones and S. W. Reynolds*

## CHEVALIER RUSCA.

- 10 60 ROBERT PRICE, (aged 18), afterwards of Geeler and of Foxley,  
born 1717 30 x 25

*Wallis*



## VAN DER BANK, 1822. .

- 10 61 MARY SOMERSET, daughter of Lord Arthur Somerset, wife of the Honourable Algenon Greville, son of 5th Lord Brook

## B. WEST, P.R.A., 1808.

- 25 62 THE HON. MRS. SHUTE BARRINGTON, second wife of Shute Barrington, Bishop of Durham, daughter of Sir John Guise, Bart. *Vobis*  
54 x 42

## UNKNOWN.

- 39 63 THE HON. AND RT. REV. SHUTE BARRINGTON, D.C.L., Bishop of Durham, son of Viscount Barrington, born 1734, died 1824 *do*  
30 x 24
- 1 63A DEAD WOODCOCK AND PARTRIDGES—a pair  
15 x 12

## FROM DIFFERENT COLLECTIONS.

## SIR JOSHUA REYNOLDS, P.R.A.

- 30 64 THE MARQUIS OF GRANBY, leaning on a mortar, an engagement in the background—whole length *Saulin*  
92 in. by 57 in.  
*Formerly at Stowe*

## VAN DYCK.

- 10 65 THE MARQUIS DE VIEUVILLE, in a white dress, and black cloak, whole length—he was killed at the battle of Auburn Chase *Bernste*  
83 in. by 47 in.  
*Formerly at Stowe*  
*Engraved*

## G. ROMNEY.

- 200 66 MRS. ST. GEORGE AND HER SON, with landscape back-  
ground *Milliams*  
*Painted at Totteridge in 1791*  
*80 x 50*

## SIR. J. REYNOLDS.

- 11 67 THE INFANT SAMUEL *36 x 24* *Wallis*  
*Replica of Picture at Knole*

## CANALETTO.

- 520 68 VIEW OF VENICE *36 x 50* *Colnaghi & Co.*  
*Painted between 1747 and 1750, for the then owner of*  
*Holland House, and sold at the sale at Holland House about*  
*1760.*

## J. BOTH.

- 190 69 AN ITALIAN RIVER SCENE, with muleteer, peasants and  
animals on a road *50 x 42* *Davis*  
*Signed*

## DE VRIES.

- 42 70 A WOODY RIVER SCENE, with overshot mill, and figures on a  
road, by Lingelbach *Wallis*

## ADRIAN OSTADE.

- 550 71 THE HURDY-GURDY PLAYER, with an audience of a  
peasant, seated, and two figures at an open door of an inn, and  
twelve other figures, a dog, and poultry—*signed* *Gooden.*  
*12½ in. by 10¼ in.*  
*This picture was purchased at a Paris auction*  
*by the Empress Eugénie for £1,300, and*  
*presented by her to the Stowe of Chislehurst.*

The following are sold by Order of the  
 Executors of C. J. NIEUWENHUYNS, Esq, deceased,  
 late of Oxford Lodge, Wimbledon.

## T. GERARD.

10 1/2 72 FIGURES AT A FOUNTAIN 36 x 24

## VAN DER MEULEN.

37 73 THE SIEGE, Tournay, with Louis XIV. and his staff in the fore-  
 ground 36 x 54 Davis

## W. MIERIS.

25- 74 A HUNTRESS, with negro and two other attendants in a landscape 16 x 20 Maple

## B. GAROFALO.

22 75 THE REPOSE OF THE HOLY FAMILY 16 x 20 Lesser

## J. C. SCHOTEL.

6 76 THE BEACH AT SCHEVENINGEN, with boats and figures 24 x 36 In Leau

## H. KOEKKOEK, 1865.

14 77 A COAST SCENE, with figures on a jetty and shipping 20 x 30 Tooth

## N. BERCHEM.

24 78 A HERDSMAN WATERING CATTLE AT A FOUNTAIN  
 Engraved in the Poulain Gallery  
 Smith's Catalogue, Vol. V. No. 58  
 12 x 10 Smith

## B. VAN ORLAY.

20 79 THE MADONNA AND CHILD, with Angels and the infant St. John  
 24 x 18

The following are the Property of the  
*Rt. Hon. Sir WILLIAM GREGORY, K.C.M.G.,*  
*deceased.*

## VELASQUEZ (AFTER).

- 21 80 ADMIRAL PULIDO PAREJA  
*From the picture in the National Gallery*  
*20x12*

*Agnew*

## L. LONGHI (OF RAVENNA).

- 20 81 A LADY RENOUNCING THE WORLD  
*30x18*

*A. Smith*

## M. PALMEZZANO.

- 19 82 THE BAPTISM OF CHRIST  
*36x24*

## VAN DER BERGHE, 1844

- 1/2 83 PEASANTS PLAYING CARDS  
*16x18*

## CIMA DA CONEGLIANO.

- 155- 84 THE MADONNA AND CHILD, a view of a city in the background  
*27x20*

*Lesser*

## VAN TOL.

- 9 85 A VIEW AT THE BACK OF A COTTAGE, with a female servant  
*14x12*

*J. Leav*

## A. PALAMEDES.

- 8 1/2 86 A GARDEN SCENE, with figures dancing  
*14x14*

*Guthrie*



## C. BEGA.

53 87 AN INTERIOR, with a peasant family and Boors  
14x12

*M. Colnaghe*

## SALOMÉ.

10½ 88 HEAD OF A GIRL

16x12

## C. R. LESLIE, R.A.

6 89 DIANA AND ACTÆON 12x12

*Shepherd*

*From the picture by Titian in the Bridgewater Gallery*

## L. M, 1866.

3½ { 90 A GLEANER

4x3

## J. A. O'CONNOR.

91 A FOREST SCENE

4x9

*A. Smith*

## O. VENIUS.

8 { 92 HEAD OF THE VIRGIN—on copper

4x3

## ESIAS VAN DE VELLE.

92A A LANDSCAPE, with haymakers

*From the Hamilton Palace Collection*

6x10

## VANDYCK.

13 92B DON DIEGO DE GUZMAN

*Exhibited at the Vandyck Exhibition, Grosvenor Gallery,*

1886-7

16x10

*Shepherd*

*The following are Sold by  
Order of the Executors of Mrs. YOUNG, deceased,  
late of Onslow Square, Brompton.*

## L. BACKHUYZEN.

23 93 THE FERRY 20 x 24 *Saunders*

## N. BERCHEM.

43 94 MILKING-TIME 16 x 20 *Larkin*  
*Signed*

## A. BRAUWER.

47 95 INTERIOR, with five boors, one searching for eggs, utensils and poultry 16 x 20 *W. Armstrong*

## F. BOUCHER.

660 96 A GIPSY ENCAMPMENT 30 x 36 *Hodgkin*  
*Signed* (*v. Seidelmeier*)

## BRECKLENCAMP.

37 97 INTERIOR, with a lady at an open door, buying fish 18 x 12 *Larkin*

## B. DENNER.

16 { 98 HEAD OF AN OLD WOMAN 16 x 12  
B. DENNER.  
99 HEAD OF AN OLD WOMAN 18 x 14 } *Nathan*

## C. DUSART.

- 25- 100 A PARTY OF PEASANTS, regaling before an inn door  
12 x 10

*Miller*

## S. FERRATO.

- 8 101 THE MADONNA AND CHILD  
9 x 7

*Jeffrey*

## GREUZE.

- 2 102 A GIRL, with a bird  
18 x 12

*Russell*

## GREUZE.

- 22 103 PET BIRDS  
14 x 12

*Hodgkin*

## METZU (AFTER).

- 2 104 THE DUET  
10 x 10

*Maxwell*

## P. NEEFS.

- 5- 105 INTERIOR OF CHAPEL, with figures—on copper

## J. OCHTERVELT.

- 80 106 INTERIOR, with a lady in white satin dress, seated, nursing a spaniel and reading a letter, a female servant with a silver basin and ewer at a table covered with a Persian carpet  
30 x 24

*Siedelmayer*

## G. TERBURG.

- 20 107 INTERIOR, WITH A LADY, seated, holding a glass of wine, an officer at her side, his left arm resting on a table, on which is a bottle  
Signed

*H. Rochefort*

14 x 12

## A. VAN DER NEER.

690

- 108 A FROZEN RIVER SCENE, with numerous figures, a town in the distance *H. Colnag*  
20 x 30

*Signed*

## A. DE VOYS.

19

- 109 A GENTLEMAN, seated at a table, holding a glass and pipe, his hat and sword on a table at his side

12 x 10

## E. DE WITTE.

42

- 110 INTERIOR OF A CHURCH, with figures *H. Quiller*

30 x 24

*The following are  
Sold by Order of the Trustees of the late  
W. PARKER HAMOND, Esq., of Pampisford  
Hall, Cambridge.*

## T. GAINSBOROUGH, R.A.

1190

- 111 PORTRAIT OF MARY, WIFE OF SIR ROBERT *Gooden*  
CARR, BART.

50 in. by 31 in

*Exhibited at Burlington House, 1873*

## T. GAINSBOROUGH, R.A.

260

- 112 PORTRAIT OF MARY, wife of W. Parker Hamond, Esq., when *Laurie*  
about eight years old. She was born in 1768

30 in. by 24 in.

*Exhibited at Burlington House, 1873*



## DOBSON.

1 113 PORTRAIT OF A DIVINE  
24 x 20

*Shepherd*

## HOGARTH (STYLE OF).

20 114 PORTRAIT OF A LADY, in white dress and blue scarf  
30 x 24

*do*

*The Property of J. L. GARDEN, Esq., deceased,  
late of Redisham Hall, Suffolk.*

## MURILLO.

17 { 115 THE VIRGIN AND CHILD—oval  
12 x 10

## BREUGHEL.

116 A VILLAGE ON A RIVER, with boats and figure—on copper  
12 x 14

*Jeffrey*

## HUGHTENBURGH.

4 117 A BATTLE PIECE 14 x 18

## DE WITTE.

21 118 SUMMER and WINTER—in *grisaille*—a pair—circles  
18"

*Maple*

## A. SALM.

5 1/2 119 A FLEET OF MEN-OF-WAR, and boats—in black and white  
*Signed* 24 x 36

## J. ROTIUS.

2 120 FRUITS, FLOWERS AND INSECTS

*Signed, and dated 1674**36 x 24**Smith  
(Duke)*

## EARLY ENGLISH.

9 121 DEAD GAME

*25 x 50**Vobiers*

## J. HOPPNER, R.A.

390 122 PORTRAITS OF MRS. GARDEN AND HER CHILDREN, THE LATE J. L. GARDEN, ESQ., AND HIS SISTER

*54 x 40**Wallis*

## TISCHBEIN.

6 123 PRINCE FERDINAND OF BRUNSWICK

*60 x 48**Agnew**FROM DIFFERENT COLLECTIONS.*

## MOUCHERON AND LINGELBACH.

31 124 DEPARTURE FOR THE CHASE: an extensive landscape, with numerous figures, horses and dogs

*From Lord Northwick's Collection, No. 64**36 x 50**M. Colnag*

## J. WYNANTS.

50 125 A GRAND LANDSCAPE, with peasants and animals

*60 x 42*

## RUBENS.

12 126 SILENUS AND BACCHANALIANs—a sketch

*16 x 22**Chase*

## J. FYT AND P. BOEL.

25- 127 A SPORTSMAN, with dogs and dead game

*65 x 80**Witley (C)*

## GUERCINO.

- 5- 128 THE AGONY IN THE GARDEN  
*Purchased from a church at Padua, 1840*  
 90 x 60

*M. Colnaghi*

## WEENIX.

- 15- 129 DEAD BIRDS  
 32 x 24

## G. SCHALCKEN.

- 16 130 INTERIOR OF A CELLAR, with a girl fetching beer: lamplight  
 12 x 9

## HONDIKOETER.

- 05- 131 DEAD BIRDS, and implements of the chase

*M. Colnaghi*

## P. VERONESE.

- 41 132 ST. SEBASTIAN ENCOURAGING THE CHRISTIAN PRISONERS LED TO  
 MARTYRDOM IN THE ARENA  
*Original sketch for the Fresco at Venice*  
 42 x 60

## OLD STONE.

- 24 133 CHARLES II., when young—whole length  
 60 x 36

*M. Leau*

## C. DE HEEM.

- 33 134 STILL LIFE

*Lesser*

## APSHOVEN.

- 41 135 A VILLAGE FESTIVAL

*From the Collection of the late Mrs. Washington Hibbert*

24 x 36  
 FINIS.

2.377 Guineas

London: Printed by WILLIAM CLOWES & SONS, Limited, Stamford Street  
 and Charing Cross.

2.995.17.-

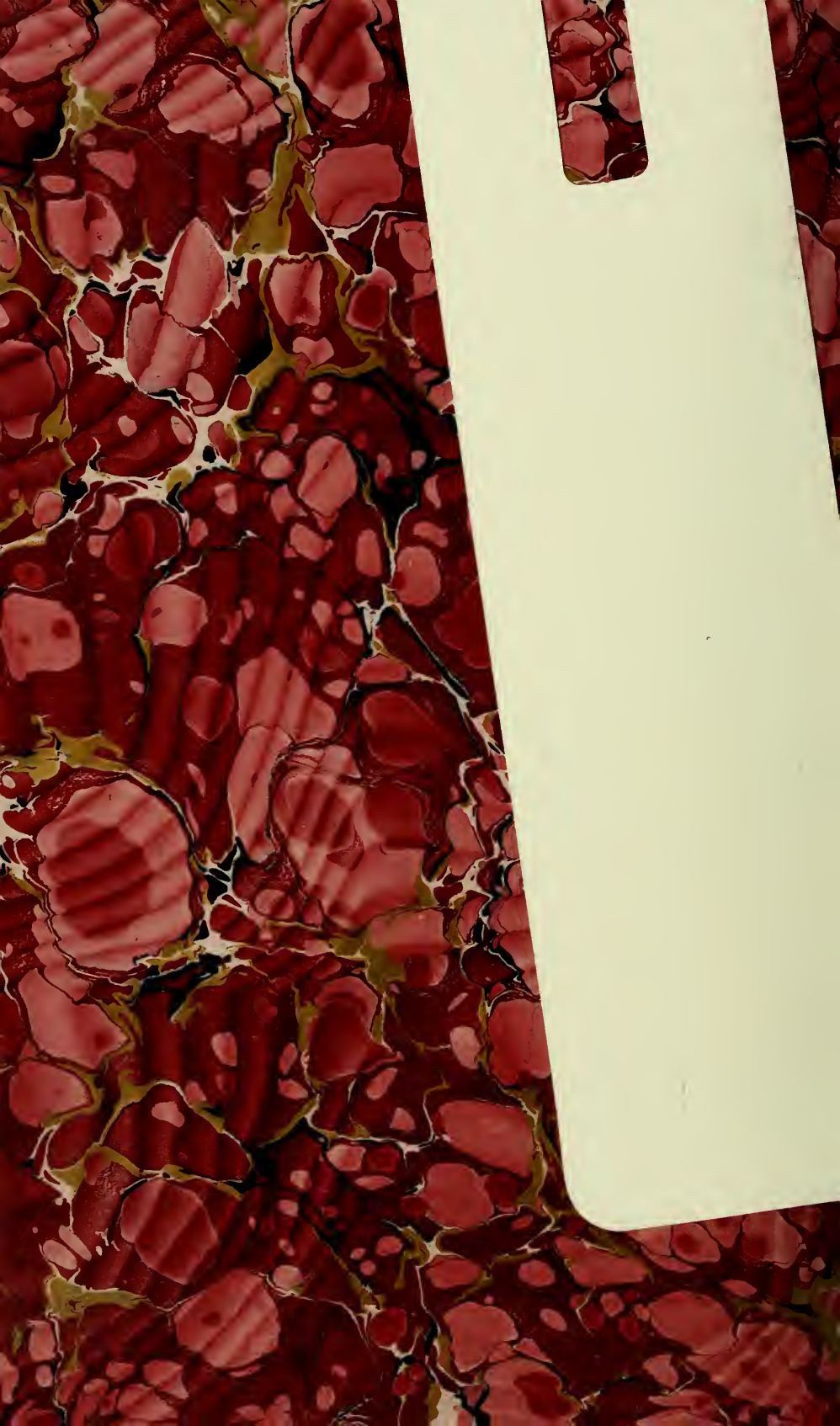
1.714.19.- (Clifden Sale)

2.110.16.-









**LIBRARY**  
GETTY CENTER



GETTY CENTER LIBRARY



3 3125 00881 9365



